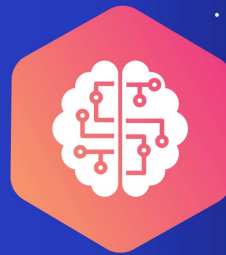


STEM PROGRAM

ARTIFICIAL INTELLIGENCE

Innovative STEM
program in Artificial
Intelligence for creating
Chatbot solutions
solving UN Sustainable
Development Goals

For Middle School
(6th & 8th grade)
and High School
students



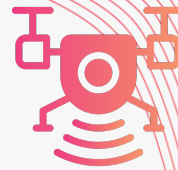
Industry based developed by
engineers from industry
unicorn Infobip and
experienced educators



stemi

SIMULATED WORK IN A TECH COMPANY

Students have a unique opportunity to experience what it is like to be an engineer, a problem solver, at a leading company in the industry, while getting to know the technology that most of today's inventions are based on. Also, video presentations by Infobip engineers are embedded into the curriculum, giving the students first-hand opportunity to learn from the experts.



PLUG-AND-PLAY CURRICULUM

Curriculum and teaching materials are provided for seamless and efficient teaching. The curriculum itself does not require previous knowledge or experience in the field of Artificial Intelligence.



- • • • • • • • • •
- • • • • • • • • •
- • • • • • • • • •
- • • • • • • • • •

COMMUNITY GIVEBACK

By studying and selecting one of the UN Sustainable Development Goals, students are creating Chatbot solutions to solve an imminent problem in their own community.



TEACHER SUPPORT

Teacher training is delivered in person and via an online platform covering general instruction techniques and specific areas of content and platform knowledge within the curriculum. Support is provided on the Slack Platform, via a 24/7 open channel for communication, with the main goal of seamless implementation and overall success in the classroom.



WHAT IS INCLUDED



CLASSROOM MATERIALS

All teaching materials are in one place - STEMI Lab Platform - virtual classroom with all accessible materials such as: interactive presentations, instructions for teachers and students, student handouts, assessment and grading rubrics.



PLATFORM ACCESS

Chatbot program development takes place on two programming platforms: STEMI Lab using Python, and Infobip Answers. Both platforms are currently cutting-edge solutions within the industry which enables students to experience the industry environment first-hand.

WHAT IS INCLUDED



PROGRAM UNITS

Program units consist of introduction to Artificial Intelligence, design thinking, machine learning exercises and chatbot development using Answer5 and Python..



TEACHER TRAINING

Three-day teacher training is provided by the team of STEMI engineers before the implementation of the program. Training goes in detail through focal parts of the curriculum and is held online.